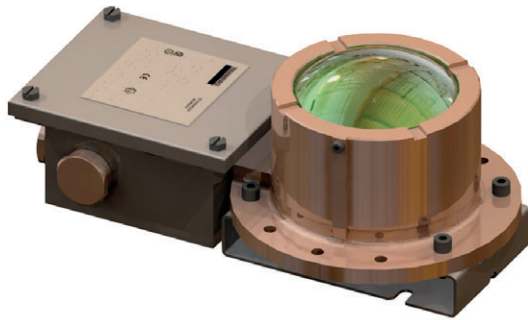


# Perimeter Light LED

## TEF 2430

TRANBERG®

STAHL



- > Integrated terminal box
- > Low maintenance
- > Rugged construction
- > Complies with: ICAO Annex 14 Vol. II and CAP 437
- > Very long operating life (up to 100,000 hours)
- > Low power consumption
- > Instant light
- > Resistant to vibrations

E2

www.stahl.de



08585E00

|            | ATEX |   |   |    |    |    |
|------------|------|---|---|----|----|----|
| Zone       | 0    | 1 | 2 | 20 | 21 | 22 |
| For use in |      | x | x |    |    |    |

### Explosion Protection

#### Marking

Europe (ATEX)

II 2 G EEx de IIB T5  
Ex de IIB T5 (Canada)  
AEx de IIB T5 Class I, Zone I (USA)

#### Certificates

Europe (ATEX)

NEMKO 03 ATEX 064  
CSA 216432

### Applications

- Perimeter lights on helideck. Green light.

WebCode T2430A

# Perimeter Light LED

## TEF 2430



### Selection Table

| Version                            | Light intensity | Voltage        | Order number |
|------------------------------------|-----------------|----------------|--------------|
| Perimeter light green LED TEF 2430 | 30 cd.          | 220 / 230 V AC | TEF2430150   |
|                                    |                 | 110 / 120 V AC | TEF2430151   |
|                                    |                 | 24 V DC        | TEF2430152   |

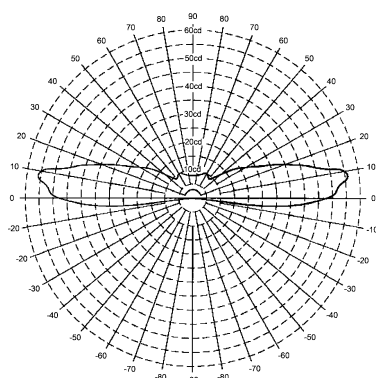
### Technical Data

#### Electrical data

|               |   |
|---------------|---|
| Rated voltage | 220 / 230 V AC 50 / 60 Hz<br>110 / 120 V AC 50 / 60 Hz<br>24 V DC |
| Power input   | Max. 10,5 W   |

#### Luminous characteristics

|                                 |                    |
|---------------------------------|--------------------|
| Lamps                           | Dependant on model |
| Light intensity                 | 30 cd.             |
| Luminous intensity distribution |                    |



08472E00

#### Ambient conditions

|                     |                  |
|---------------------|------------------|
| Ambient temperature | - 30 ... + 50 °C |
|---------------------|------------------|

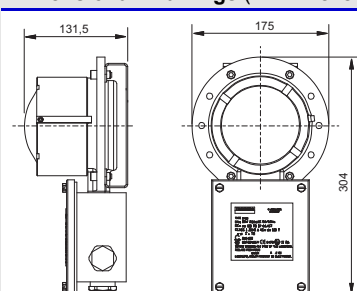
#### Mechanical data

|                      |  |
|----------------------|--|
| Degree of protection | IP66 / IP67 without drain plug   |
| Material             | Lamphousing: Cast copper alloy<br>Junction box: AISI 316L<br>Globe: Polycarbonat (Lexan)   |
| Service life         | Min. 50,000 working hours  |
| Cable glands         | 4 x M25 cable entries<br>Delivered with:<br>2 x M25 stopping plugs<br>2 x M25 cable glands |

### Accessories and Spare Parts

| Designation   | Description   | Order number |
|---------------|---|--------------|
| Globe         | with green LED's low Type                               | TEF4500      |
| Mountingplate | Mountingplate W / Transformer 110 V / 250 V AC Complete | TEF4236      |
| O-Ring        | for globe / guard ring                                  | TEF50008009  |
| Cable Gland   | Cable gland EEx e, M25                                  | TEF9147200   |

### Dimensional Drawings (All Dimensions in mm) - Subject to Alterations



08586E00

We reserve the right to make alterations to the technical data, dimensions, weights, designs and products available without notice. The illustrations cannot be considered binding.

Representante oficial de:



[Argentina – Uruguay – Paraguay – Bolivia – Ecuador.]



Calle 49 N° 5764 - Villa Ballester (B1653AOX) - Prov. de Buenos Aires - ARGENTINA  
Tel: (+54 11) 4768-4242 / Fax: (+54 11) 4849-1212  
Mail: [ventas@nakase.com.ar](mailto:ventas@nakase.com.ar) / Web: [www.nakase.com.ar](http://www.nakase.com.ar)

---

