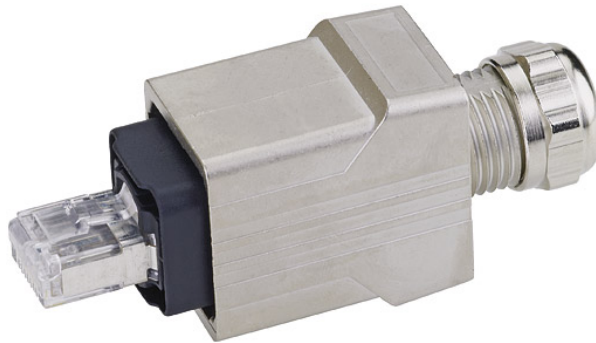


Push Pull, RJ45
Male straight
4-pole
insulation displacement technology
Connection diameter: 0.14...0.34 mm²

Image



Vicarious picture

Bus technologies



Form

99611

Technical Data

Operating voltage	50 V AC/DC
Operating current per contact (40 °C)	max. 1.75 A
Connection diameter	0.14...0.34 mm ² (AWG 26...22)
Clamping range (cable diameter)	5...8 mm
Transfer parameters	Category 5/class D to 100 Mhz (ISO/IEC 11801:2002), (EN 50 173-1)
Transfer rate	10/100 MBit/s full duplex
Protection	IP65 and IP67 when plugged and screwed down (EN 60529)
Temperature range	-40...+70 °C, depending on cable quality

Commercial data

Net weight	70
Net weight	70
Weight unit	gram
Basic unit	pc.
Customs tariff number	85366990
Unit (piece)	1
Limited value	1

Comments

Plastic housings with good resistance against chemicals and oils.
The resistance to aggressive media should be individually tested for your application. Further details on request.

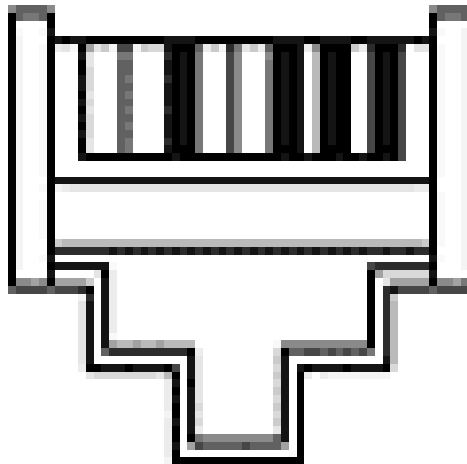
All data on this data sheet was compiled carefully.

Liability regarding correctness, completeness, and actuality is limited to gross negligence. Created: 06/12

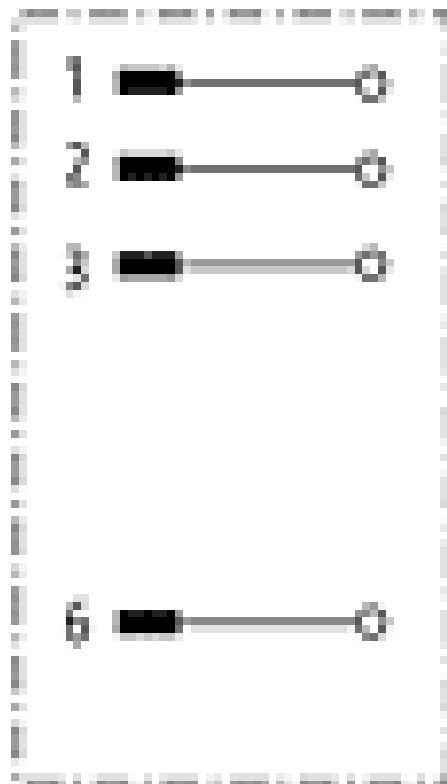
Contact layout

Male

6 3 2 1



Circuit diagram



Representante oficial de:



[Argentina – Uruguay – Paraguay – Bolivia – Colombia – y Perú.]



Calle 49 N° 5764 - Villa Ballester (B1653AOX) - Prov. de Buenos Aires - ARGENTINA
Tel: (+54 11) 4768-4242 / Fax: (+54 11) 4849-1212
Mail: ventas@nakase.com.ar / Web: www.nakase.com.ar

