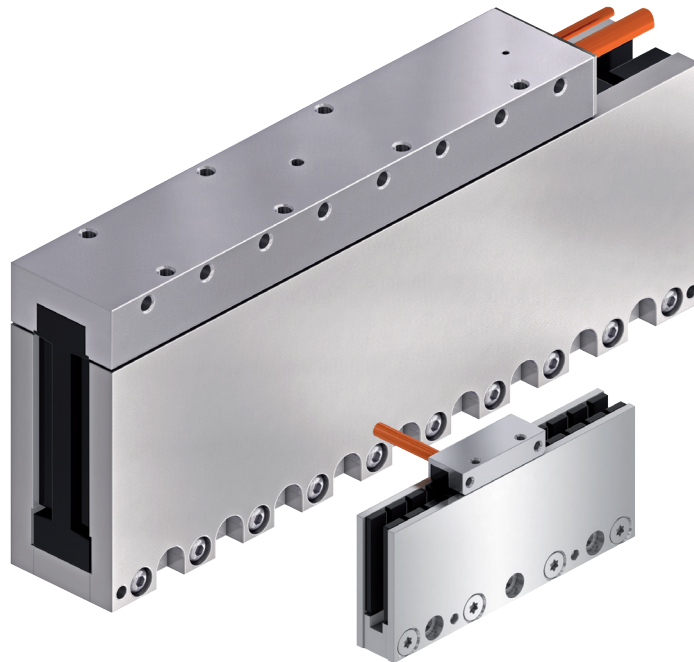


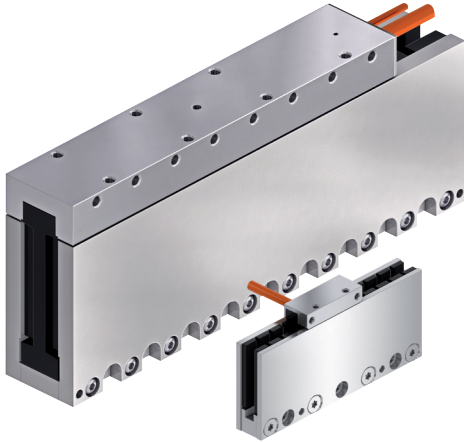
Motors and gearboxes

Linear motors

MCL - Dynamic and compact



Motors and gearboxes

Linear motors ■ MCL - Dynamic and compact**Linear motor without iron core**

- Maximum force up to 1,700 N
- Maximum velocity up to 1,400 m/min
- Excellent synchronization, no cogging forces
- Low own weight, high acceleration and dynamics
- Simple integration thanks to various mounting planes

Ironless MCL linear motors position small masses with superior precision and maximum synchronization. Compared to iron core motors, these motors distinguish themselves with the ironless design of the primary part, which contains the fully compound-filled three-phase copper winding. The U-shaped secondary part contains permanent magnets and encloses the primary part. This design means that there is no attraction or cogging force between the primary and secondary part and the force constant is linear.

These aspects, combined with the relatively small mass movement by the primary part, create a high level of dynamics with a very high degree of precision. The compact design provides different mounting planes for mounting primary and secondary parts, providing the highest flexibility in construction design. Optionally, the linear motors also come with a Hall sensor unit to detect the position for the initial commutation.

Typical areas in which ironless linear motors can be used are applications where it is important to move small masses at the maximum possible cycle speed with extremely high precision. That includes pick-and-place machines used in the semiconductor segment as well as those used in general automation processes. The exceptionally high synchronization of the MCL motors also makes them perfect for use in measuring and testing machines.

Technical data**Electrical data**

Type	Continuous rated force	Maximum force	Rated speed	Max. speed at F _{max}	Rated current	Maximum current
	F _N	F _{Max}	V _N	V _{F Max}	I _N	I _{Max}
	[N]	[N]	[m/min]	[m/min]	[A]	[A]
MCP015A-L040	6	24	600	90	1.3	5.2
MCP015B-L040	12	48	560	170	2.4	9.6
MCP020B-V180	26	104		200	0.8	3.2
MCP020B-V720			1100	690	1.4	5.6
MCP020C-V180	40	160	590	150	1.3	5.2
MCP020C-V720			1110	680	2.2	8.8
MCP020D-V180	56	224	620	190	1.9	7.6
MCP020D-V720			1220	760	3.5	14
MCP030B-V180	48	192	510	180	1.3	5.2
MCP030B-V390			680	400	1.6	6.4
MCP030C-V180	74	296	460	170	1.8	7.2
MCP030C-V390			630	370	2.4	9.6

Motors and gearboxes

Linear motors ■ MCL - Dynamic and compact**Electrical data**

Type	Continuous rated force	Maximum force	Rated speed	Max. speed at F _{max}	Rated current	Maximum current
	F _N	F _{Max}	V _N	V _{F Max}	I _N	I _{Max}
	[N]	[N]	[m/min]	[m/min]	[A]	[A]
MCP030D-V180	105	420	440	180	2.5	10
MCP030D-V390			660	380	3.5	14
MCP040B-V070	73	292	290	80	1.2	4.8
MCP040B-V300			530	290	1.9	7.6
MCP040C-V070	108	432	290	60	1.7	6.8
MCP040C-V300			530	310	2.9	11.6
MCP040E-V070	183	732	280	60	2.9	11.6
MCP040E-V300			510	260	4.7	18.8
MCP040G-V070	258	1032	260	50	3.9	15.6
MCP040G-V300			500	290	6.6	26.4
MCP070C-V050	215	860	180	50	2.2	8.8
MCP070C-V300			490	340	5.1	20.4
MCP070D-V050	286	1144	180	50	2.8	11.2
MCP070D-V300			460	280	6.4	25.6
MCP070F-V050	428	1712	210	70	4.6	18.4
MCP070F-V300			460	290	9.2	36.8

All the specifications relate to operation with 300 V DC bus voltage (48 V for MCL015) and an optimal thermal connection.

Dimensions

Type	A	B	C	Mass		
	[mm]	[mm]	[mm]	[kg]		
MCP015A-L040	51	14.8	34	0.04		
MCP015B-L040			67	0.06		
MCP020B-V180	52	20.8	127	0.18		
MCP020B-V720			187	0.28		
MCP020C-V180					247	0.38
MCP020C-V720						
MCP020D-V180					247	0.38
MCP020D-V720						
MCP030B-V180	67	25	127	0.34		
MCP030B-V390			187	0.52		
MCP030C-V180					247	0.7
MCP030C-V390						
MCP030D-V180					247	0.7
MCP030D-V390						

Motors and gearboxes

Linear motors ■ MCL - Dynamic and compact

Type	A	B	C	Mass		
	[mm]	[mm]	[mm]	[kg]		
MCP040B-V070	86.4	34.3	127	0.56		
MCP040B-V300			187	0.81		
MCP040C-V070						
MCP040C-V300						
MCP040E-V070					307	1.26
MCP040E-V300					427	1.71
MCP040G-V070						
MCP040G-V300						
MCP070C-V050	124	49.5	187	1.5		
MCP070C-V300			247	1.95		
MCP070D-V050						
MCP070D-V300						
MCP070F-V050					367	2.85
MCP070F-V300						

Type	D	Mass
	[mm]	[kg]
MCS015-0066	66	0.2
MCS015-0099	99	0.3
MCS020-0120	120	0.45
MCS020-0180	180	0.67
MCS020-0300	300	1.12
MCS030-0120	120	0.66
MCS030-0180	180	1
MCS030-0300	300	1.64
MCS040-0120	120	1.29
MCS040-0180	180	1.92
MCS040-0300	300	3.22
MCS070-0120	120	2.98
MCS070-0180	180	4.46
MCS070-0300	300	7.44

Representante oficial de:

Rexroth
Bosch Group

[Argentina]



Calle 49 N° 5764 - Villa Ballester (B1653AOX) - Prov. de Buenos Aires - ARGENTINA
Tel: (+54 11) 4768-4242 / Fax: (+54 11) 4849-1212
Mail: ventas@nakase.com.ar / Web: www.nakase.com.ar

